

# BENTEN

## ELEMENTARY SCHOOL

*Weekly Construction Progress Report*  
*Week 02/13/2023-02/17/2023*



**Balfour Beatty**

## Current Activities 02/13/23-02/17/23

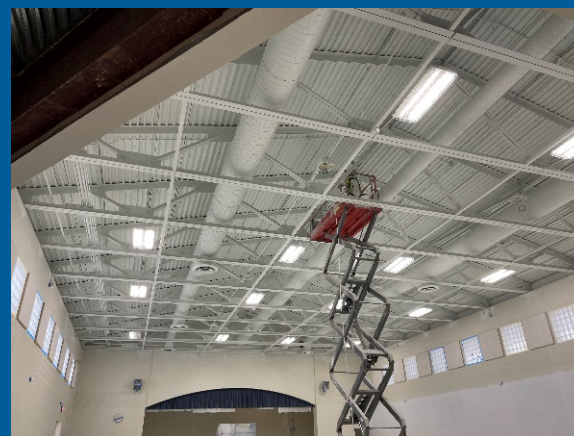
- Installation of VRF line sets and cassettes at areas D and E.
- Electrical rough-in for emergency life safety system. - Complete
- Installation of electrical shut off switches for VRF system at area D and E.
- Demolition and installation of new TPO roofing at D-East
- Prep and prime classroom walls in area B & C - Completed
- Installation of equipment curbs on roof @ Area D
- Demolition of front entry sidewalk and doors/windows - Completed
- Wall preparation for paint throughout the building
- Installation of rooftop equipment support steel at area D.
- Passed duct seal inspection for COA @ Area E
- Installation of Dry fall at gym ceiling - Completed
- Prep restroom floors to receive new epoxy flooring
- Excavation of secure vestibule and canopy footings
- English Ivy removal – Completed
- VRF Line set pressure testing – ongoing
- Insulation of duct work at area B, and C

## Upcoming Activities 02/20/23-02/24/23

- Damp proofing of CMU infills
- Pouring of S.O.G and canopy footings
- Rooftop steel at cafeteria installation at area E
- Insulation of duct work at area B, and C
- Install ceiling grid



Vestibule Footings Poured



Gym Ceiling Paint complete

 **BRPH**

**Balfour Beatty**

## Progress Photos



Floor prep for epoxy flooring



MEP Rough-ins



New Ductwork installed in cafeteria



Vestibule Footings being excavated



Excavation of footings and anchor bolts

## Project Schedule

- Schedule Status: On Schedule



## Project Financials

- Construction GMP: \$9,989,727.77
- Progress Billed to Date: \$2,335,159
- Budget Status: Within GMP



**Balfour Beatty**